



National
Disability
Data Asset



National Disability Data Asset

How will the National Disability Data Asset Council work?

An Easy Read summary



How to use this summary



The Australian Government Department of Social Services (DSS) wrote this summary for the National Disability Data Asset team.

When you see the word 'we', it means DSS.



We wrote this summary in an easy to read way.

We use pictures to explain some ideas.

Bold

We wrote some important words in **bold**.

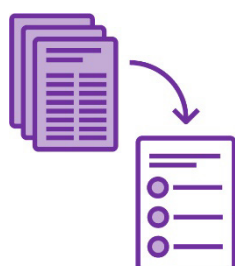
Not bold

This means the letters are thicker and darker.



We explain what these bold words mean.

There is a list of these words on page 17.



This is an Easy Read summary of another document.

This means it only includes the most important ideas.



You can ask for help to read this summary.

A friend, family member or support person may be able to help you.

What's in this summary?

What is the National Disability Data Asset? 4

What will the Council do? 7

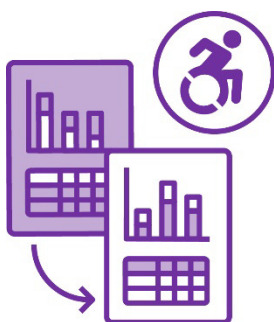
Who will be on the Council? 10

How will the Council share information? 15

Word list 17

Contact us 19

What is the National Disability Data Asset?



The National Disability Data Asset is a new way to link **data** about people with disability.

In this summary we call it the data asset.



When we talk about data, we mean:

- facts
- information
- records.



The data asset will get data about people with disability from different parts of the government.

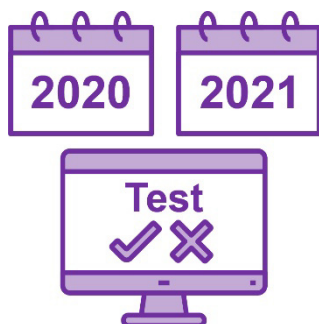


It will help us better understand the experiences of people with disability.

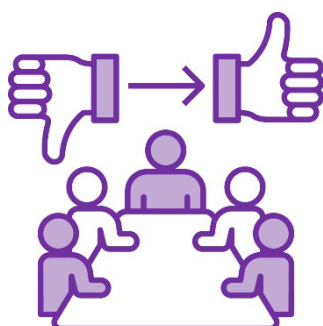


It will also give us more information about programs and services.

What is the Council?



We spent 2 years testing how the data asset would work.



During this time, a group of people gave us advice about how to make things better.



Their advice was about how the data asset should work.



And included creating the National Disability Data Asset Council

We call it the Council.

The Council will make sure people are using the data asset in the right way.



The group of people also shared rules the Council should follow.



These rules include agreeing with the disability community about how to use the data asset.

What will the Council do?



The Council's job is to make sure people are using the data asset in the right way.



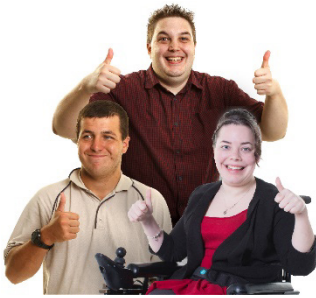
They will also make sure people only use the data for things everyone agreed to.



The Council will share advice with the disability **ministers**.

A minister leads an area of government.

This includes advice on:



- how to use data to make life better for people with disability



- new areas of research



- how to update the data asset, such as improving the way governments collect data.



The Council will make sure people are using the data asset safely.



They will:



- build trust with the disability community
- support the community to use the data asset.



They will also share information with the community.



This includes what people are using the data asset for.

And how this is helping people with disability.



They will share stories of what works well.

For example, if the data leads to something changing.

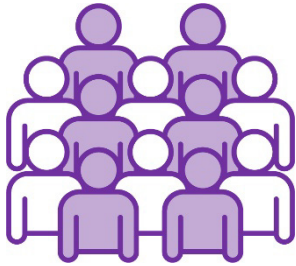


They will also report on anything they worry about.



And they will support the community to share their ideas.

Who will be on the Council?



The Council will have 12 members.



6 members will work for governments.



3 members will be disability experts who don't work for the government.



3 members will be from the disability community.



Council members will include people with **lived experience** of disability.



If you have lived experience of disability, you:

- know what life can be like for people with disability
- can tell your story to help others.



You might:

- have a disability
- be a family member or carer.

Council members will include people who are experts in:



- disability policies – government plans about how to do things
- disability services
- managing data.

Council members will also include people from different:



- backgrounds



- places around Australia.

And the Council will include members with different **genders**.



Your gender is what you feel and understand about who you are as a person.

You might think of yourself as a man or woman or another gender.

You can choose the words that are right for you.

How will we choose Council members?



Governments will tell disability ministers who they think should be on the Council.

This includes the:



- 6 people from governments



- 3 experts who don't work for the government.



Experts in disability will suggest the 3 people from the disability community.



Disability ministers will consider each of the 12 Council members.

And agree for them to be part of the Council.



Who will lead the Council?



The Council will have 2 leaders.



One leader will be a member from the disability community.



One leader will be a member from the government.

How will the Council share information?



The Council will share updates on:

- what people are doing with the data asset
- what is working well
- any issues.



They will also share advice with disability ministers about the data asset.



And check how well everything is working.

This includes checking:



- any issues



- what people have used the data for.

It also includes checking:



- how what we learn from research might affect people with disability



- what the community thinks about how the data asset is working.



The Council will share a report each year with all this information.

Word list

This list explains what the **bold** words in this document mean.



Data

When we talk about data, we mean:

- facts
- information
- records.



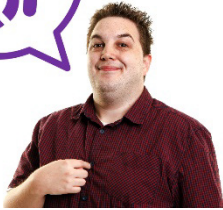
Gender

Your gender is what you feel and understand about who you are as a person.

You might think of yourself as a man or woman or another gender.

You can choose the words that are right for you.

Lived experience



If you have lived experience of disability, you:

- know what life can be like for people with disability
- can tell your story to help others.



You might:

- have a disability
- be a family member or carer.



Minister

A minister leads an area of government.

Contact us



If you want to find out more about the National Disability Data Asset, you can contact us.



You can visit our website.

www.ndda.gov.au



You can send us an email.

NDDA@dss.gov.au



The Information Access Group created this Easy Read document using stock photography and custom images. The images may not be reused without permission. For any enquiries about the images, please visit www.informationaccessgroup.com. Quote job number 5162-C.